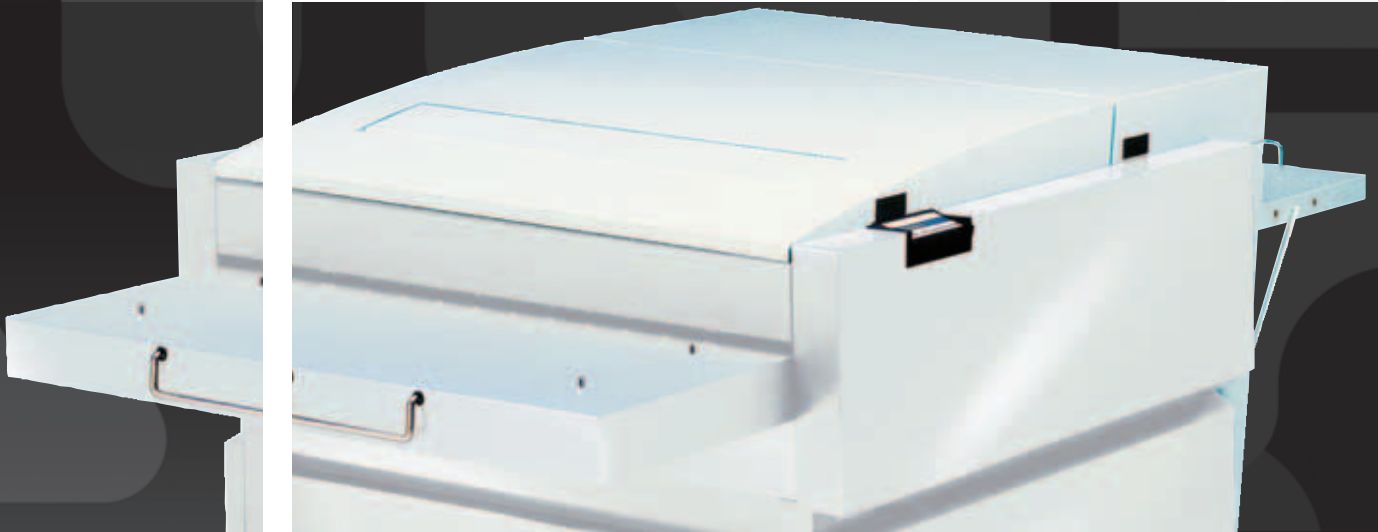


InterPlater 85HD/135HD



Reliable, heavy-duty plate processing

Designed on the basis of Glunz & Jensen's unique PlateTech concept, the InterPlater 85HD/135HD plate processor develops single-sided positive and negative presensitised offset plates to a consistently high and uniform quality. InterPlater HD also develops most CtP thermal plates on the market.*

InterPlater HD handles plate widths of up to 850 and 1350 mm (34" and 53") and a daily output of up to 300 m² (3,239 ft²). The exceptional features thus make the InterPlater HD the right choice for any customer whose operations require heavy-duty processing of uniform high quality, such as large, commercial and newspaper printers. The attractive design allows the InterPlater to fit into any environment, office as well as press room.

The patented, unique and innovative developing section, DevoChamber, guides the material through the process without risk of bending or buckling. At the same time, Devo-Chamber minimises oxidation and foaming, which reduces the use of chemicals significantly. Based on a new and unique modular concept, the InterPlater HD brings flexibility into the pre-press arena.

* Options needed



The snap lock system makes removal of the rollers a very easy operation.

Roller pressure is adjusted at the factory and is not affected when rollers are removed. Any further adjustment is made simple by a scale on the roller snap locks.



The placing of the developer filter right under the top cover allows it to be removed easily. It also means that the tank system does not need to be emptied prior to filter removal. An optional range of filters meets all applications and needs.



The heavy drives and gear wheels are just one visible sign of the sturdy design which ensures a long product life time with an absolute minimum of service, even with the most demanding of applications.



The basic module, developer and rinse/gum/drying sections, can be separated, making moving through a standard doorway easy.

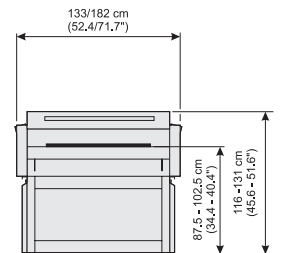
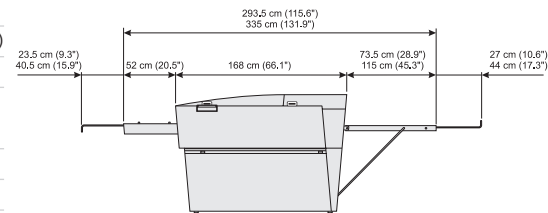
Technical specifications

InterPlater 85HD/135HD



Shown with additional options

Type of plate	Positive and negative conventional plates or CTP thermal plates
Plate width	Max. 850 mm (33.5") / 1350 mm (53.1")
Plate length	Min. 315 mm (12,3")
Plate thickness	0.15-0.40 mm (0.006-0.016") / 0.15-0.50 mm (0.006-0.02")
Processing speed	40-150 cm/minute $\pm 5\%$ (15.7-59.1"/minute $\pm 5\%$)
Tank contents, developer	43 l (11.2 US gal) / 63 l (16.6 US gal)
Tank contents, gum	Recirculating from container
Area replenishment amount	0-250 ml/m ² $\pm 5\%$ (0-0.066 gal/m ² $\pm 5\%$)
Water supply	Tapwater, pressure min. 1 bar / 15 psi
Water consumption	Adjustable max. 10 l/min (2.6 US gal) (can be reduced by optional kit)
Wash	Tapwater
Adjustable temp., developer	18-40°C $\pm 0.5^\circ\text{C}$ (64-104°F $\pm 0.9^\circ\text{F}$) A cooling unit is recommended under certain conditions.
Adjustable temp., dryer	30-55°C $\pm 0.5^\circ\text{C}$ (86-131°F $\pm 0.9^\circ\text{F}$)
Diameter of rollers	54 mm (2.1") / 69 mm (2.7")
Dip length	38 cm (15")
Dip length - to squeeze roller	45 cm (17.7")
Brushes	Diameter: 55 mm (2.2") Adjustable speed 40-130 rpm
Filters	1 x 10" 150 micron
Gum distribution	Flow tube and idler roller
Warm up time max, developer	0.4°C/min (0.8°F/min)
Level control in tank	Yes
Height	950 mm ± 75 mm (37" ± 3 ")
Weight, crated	550 kg (1,213 lbs) / 800 kg (1,764 lbs)
Weight, non crated	325 kg (716 lbs) / 525 kg (1,157 lbs)
Power supply	50-60Hz, 230/400V, 1/3
Power consumption (max.)	5 kW / 5,7 kW
Voltage tolerance	+/- 10%
Approvals	UL, c-UL, and GOST-R certified. Complies with CE standards.



Standard equipment: Closed stand, DevoChamber developing concept, Min. plate length 315 mm, Scrubbing brush in developer section (PPN 0.1), Fully automatic replenishment system, Filtration unit with 150 micron filter in developer section, Automatic cleaning of gum section, Easy lift top cover (special hinges), Emergency stop.

Optional accessories: Interfaces for most common thermal plate setters, Second brush for negative development (PPN 0,1), Very soft nylon brush for developer and wash section (PA 6.12), Soft scrubbing brush for developer section (PPN 0.08), 140 micron reusable filter, Quick fill pump (6-8 ltr/min (1.6-2.1 gal/min)), Short plate kit 305 mm plate length, Brush in wash section (PPN 0,1), Circulation in wash section (water saving), Container alarm kit, Hand shower for cleaning, High and standard capacity cooling unit, Conductivity read-out, Remote Enabling, Feed table, Extension of feed table, Exit table, Plate stackers, Top lid with rewash slot, Trolley for waste or chemical containers, Recommended spare part kits.

Standard configurations may vary in the market. Specifications are subject to changes without prior notice.

GLUNZ & JENSEN

Headquarters:
 Glunz & Jensen A/S
 Haslevej 13
 DK-4100 Ringsted
 Denmark
 Tel. +45 57 68 81 81
 Fax +45 57 68 83 40
 E-mail: gjhq@glunz-jensen.com
 Internet: www.glunz-jensen.com

USA Operations:
 Glunz & Jensen, Inc.
 21405 Business Court
 Elkwood, VA 22718-1757
 USA
 Tel. +1 540 825-7300
 Fax +1 540 825-7525
 E-mail: usva@glunz-jensen.com